

# Connecting to HWSGuestWireless on Campus Windows XP

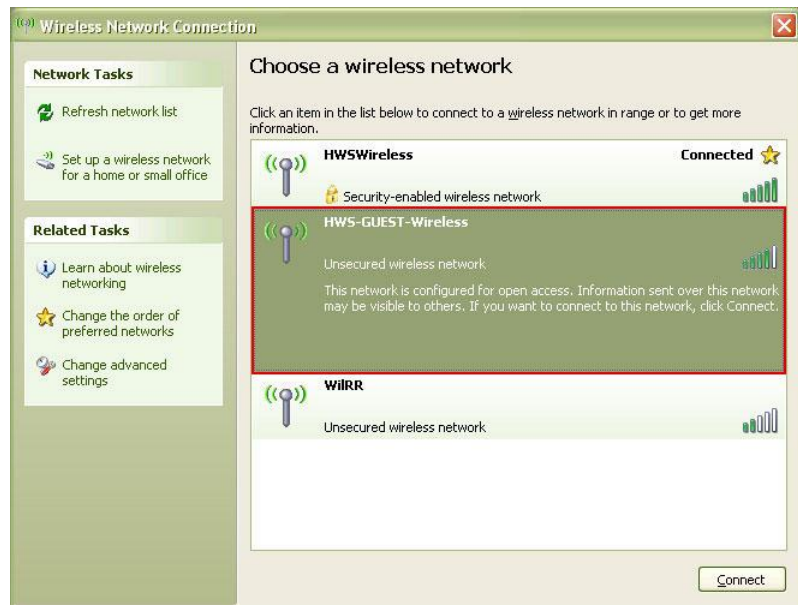
12/19/2006

## To connect to HWSGuestWireless on campus:

1. In the system tray, double-click the **wireless connection icon**



2. Double-click the **HWSGuestWireless** connection



3. Open your **Web browser** (Internet Explorer, Firefox, etc.)

You will be redirected to the Guest Wireless access page.

4. Click **Guest Access**

You will have Internet access for four hours (at the end of this time you will have to repeat the above instructions to remain on the Internet).

