

Configuring for HWS Dial-up Windows XP

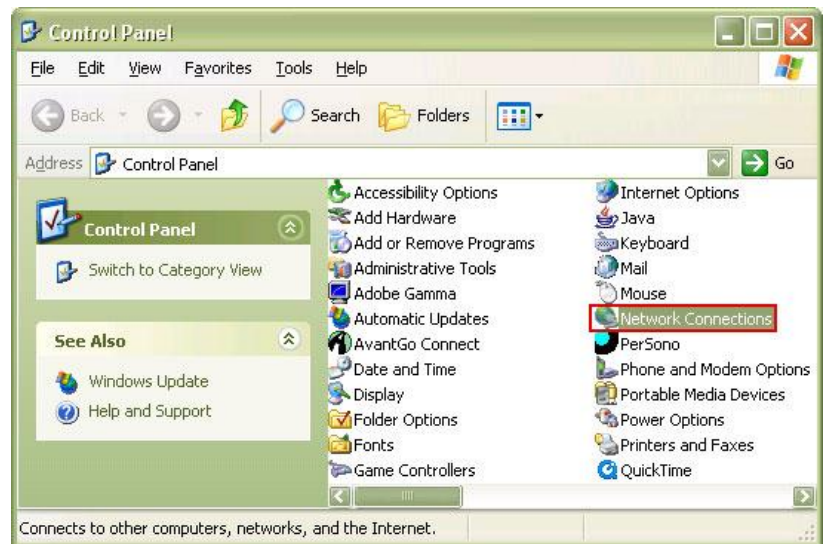
12/14/2006

Please note the daily limit for dial-up connections is four hours per user. Technical reasons prohibit us from making individual changes to this time limit.

While you are connected, the HWS network may automatically disconnect you if you are not using the Internet to give other users an opportunity to connect.

To configure your computer for HWS dial-up:

1. Click **Start > Control Panel**
2. In the Control Panel, double-click **Network Connections**



3. In the Network Connections window, under Network Tasks, click **Create a new connection**



Configuring for HWS Dial-up Windows XP

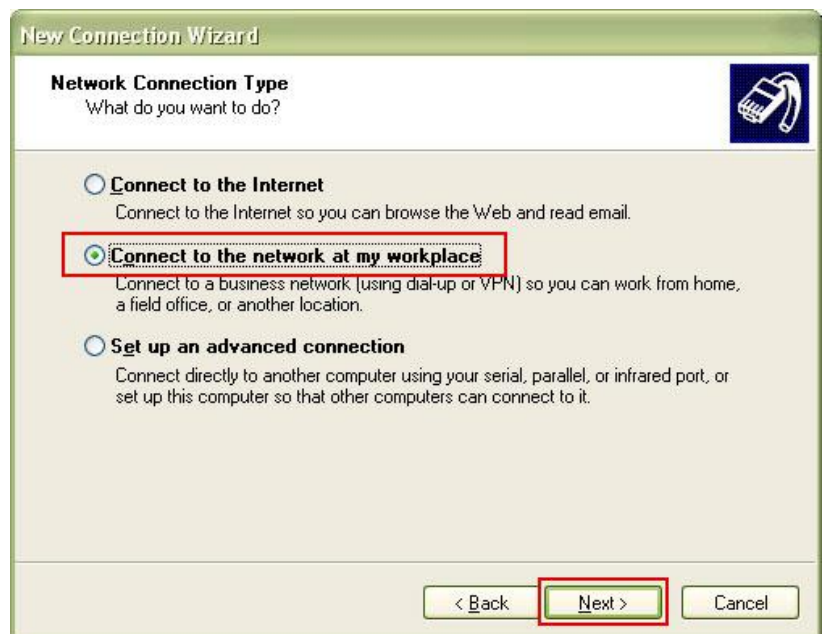
12/14/2006

4. At the New Connection Wizard welcome window, click **Next**



5. At the Network Connection Type window, click **Connect to the network at my workplace**

6. Click **Next**



Configuring for HWS Dial-up Windows XP

12/14/2006

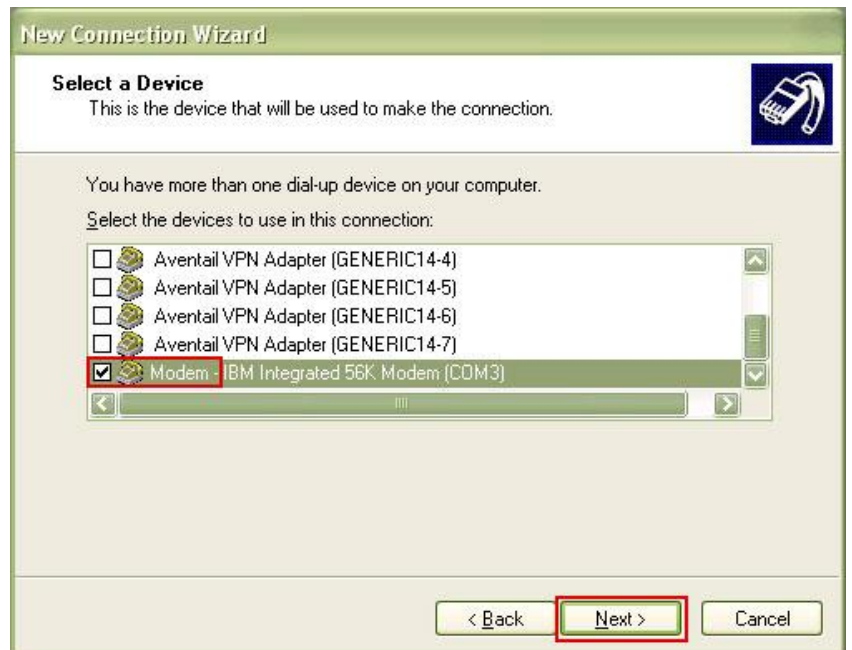
7. At the Network Connection window, click **Dial-up connection**

8. Click **Next**



9. At the Select a Device window, check **Modem**

10. Click **Next**

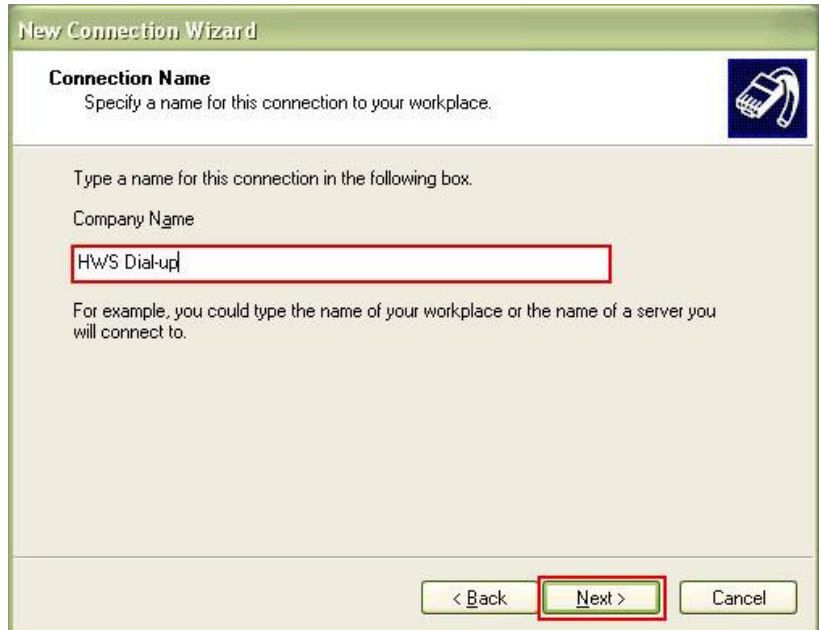


Configuring for HWS Dial-up Windows XP

12/14/2006

11. At the Connection Name window, enter a **meaningful name** for the connection

12. Click **Next**



The screenshot shows the 'New Connection Wizard' window with the 'Connection Name' step. The title bar reads 'New Connection Wizard'. Below the title bar, the text says 'Connection Name' and 'Specify a name for this connection to your workplace.' There is a small icon of a telephone handset in the top right corner. The main area contains the instruction 'Type a name for this connection in the following box.' followed by 'Company Name' and a text input field containing 'HWS Dial-up'. Below the input field, there is a note: 'For example, you could type the name of your workplace or the name of a server you will connect to.' At the bottom right, there are three buttons: '< Back', 'Next >', and 'Cancel'. The 'Next >' button is highlighted with a red rectangle.

13. At the Phone Number to Dial window, enter the campus dial-up number:

- If Geneva is a local call for you, enter **781-4040** as the number
- If Geneva is not a local call, you may need to include the area code **315**; please check with your telephone service provider for dialing rules
- If you intend to use your computer in a hotel, **uncheck** Use area code and dialing rules and enter **9-1-315-781-4040** as the telephone number



The screenshot shows the 'New Connection Wizard' window with the 'Phone Number to Dial' step. The title bar reads 'New Connection Wizard'. Below the title bar, the text says 'Phone Number to Dial' and 'What is the phone number you will use to make this connection?' There is a small icon of a telephone handset in the top right corner. The main area contains the instruction 'Type the phone number below.' followed by 'Phone number:' and a text input field containing '315-781-4040'. Below the input field, there is a note: 'You might need to include a "1" or the area code, or both. If you are not sure you need the extra numbers, dial the phone number on your telephone. If you hear a modem sound, the number dialed is correct.' At the bottom right, there are three buttons: '< Back', 'Next >', and 'Cancel'. The 'Next >' button is highlighted with a red rectangle.

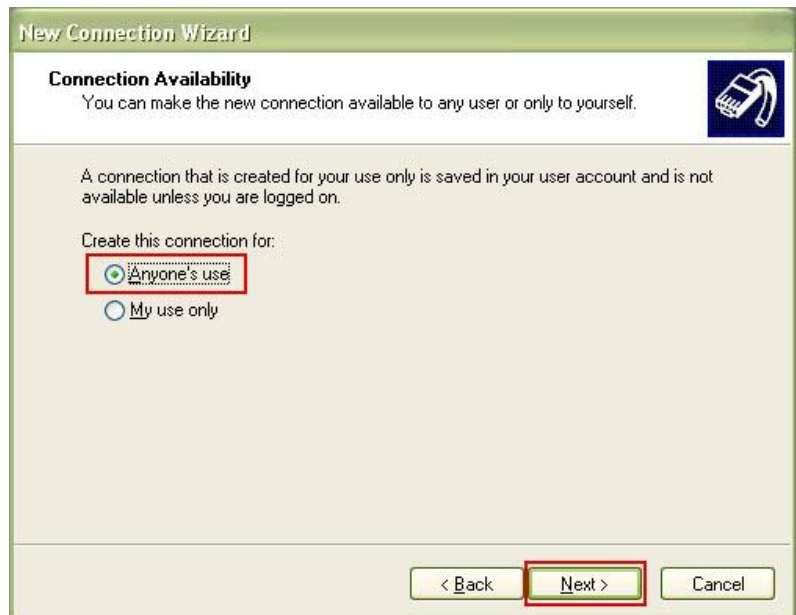
14. Click **Next**

Configuring for HWS Dial-up Windows XP

12/14/2006

15. At the Connection Availability window, click **Anyone's use**

16. Click **Next**



17. At the Completing the New Connection Wizard window, check **Add a shortcut to this connection to my desktop**

18. Click **Finish**

If you are having problems, please contact the help desk at ext. 781-4357 or e-mail us at helpdesk@hws.edu.

