

Mapping Network Drives (M, N and I) Windows XP

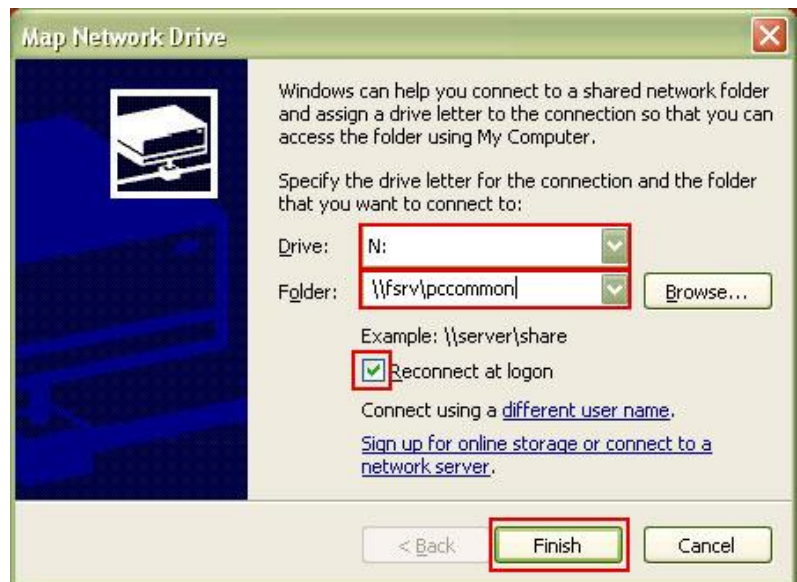
12/19/2006

To map your network drives:

1. Right-click **My Computer**
2. Select **Map Network Drive**



3. In the Drive dropdown menu, choose the drive letter:
 - **M:**
 - **N:**
 - **I:**
4. In the Folder field, enter the **folder location**:
 - For M: enter `\\fsrv\yourusername$`
 - For N: enter `\\fsrv\pccommon`
 - For I: enter `\\fsrv\netcommon`



5. Check **Reconnect at logon**
6. Click **Finish**
7. If prompted for a username and password, enter **yourusername@hws.edu** and your **password**
8. Click **OK**

A new window will open showing the folder contents.

If you have difficulties using these directions or you wish to provide feedback, please e-mail helpdesk@hws.edu or call ext. 4357.